



FRAME FINISH:
WHITE
BRONZE
CLEAR ANODIZED

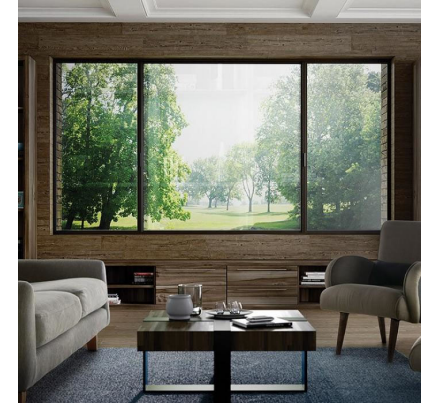
GLASS MAKE-UP:
IMPACT LAMINATED 7/16"
IMPACT LAMINATED 9/16"
IMPACT INSULATED 1 1/16"

SIZE:
MAX W: 66in - MAX H: 120in

DP:
UP TO 180 (+/- PSF)

EVALUATIONS:
TAS 201-94
TAS 202-94
TAS 203-94
ASTM E331-00
ASTM E283-04
ASTM E1886-13a
ASTM E1996-14a

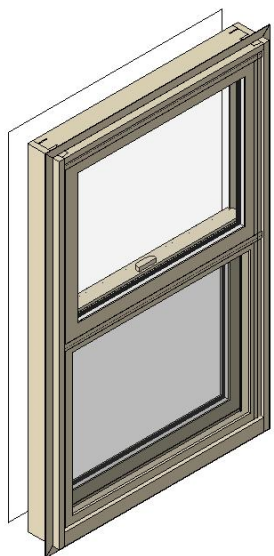
COLONIALS:
1" FLAT BARS AVAILABLE



EuroCraft

Aluminum Fixed Window Series 100





FRAME FINISH:
WHITE
BRONZE
CLEAR ANODIZED

GLASS MAKE-UP:
IMPACT LAMINATED 7/16"
IMPACT LAMINATED 9/16"
IMPACT INSULATED 1 1/16"

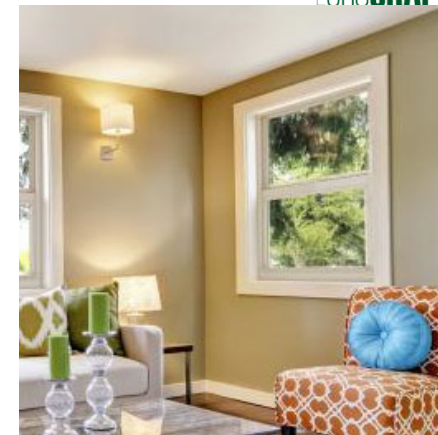
SIZE:
MAX W: 53" - MAX H: 96"

DP:
UP TO 140 (+/- PSF)

EVALUATIONS:
TAS 201-94
TAS 202-94
TAS 203-94
ASTM E331-00
ASTM E283-04
ASTM E1886-13a
ASTM E1996-14a

SCREENS:
FIXED SCREENS AVAILABLE

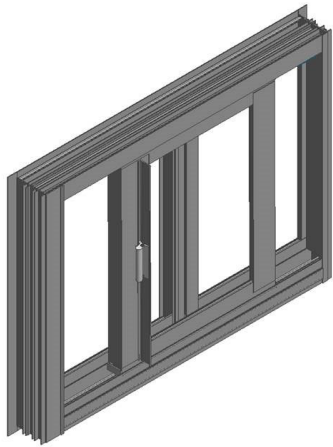
COLONIALS:
1" FLAT BARS AVAILABLE



EuroCraft

Aluminum Single Hung Series 200





FRAME FINISH:
WHITE
BRONZE
CLEAR ANODIZED

GLASS MAKE-UP:
IMPACT LAMINATED 7/16"
IMPACT LAMINATED 9/16"
IMPACT INSULATED 1 1/16"

SIZE:
OX: MAX W:80" - H:76"
XOX: MAX W:120" - H:76"

DP:
UP TO 140 (+/- PSF)

EVALUATIONS:
TAS 201-94
TAS 202-94
TAS 203-94
ASTM E331-00
ASTM E283-04
ASTM E1886-13a
ASTM E1996-14a

SCREENS:
FIXED SCREENS AVAILABLE

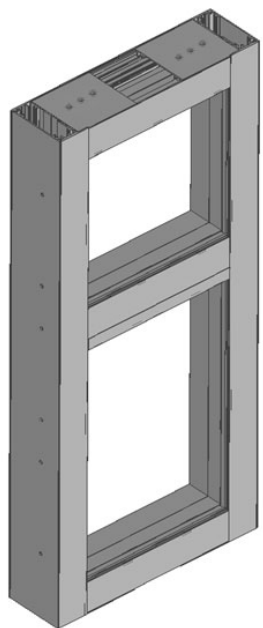
COLONIALS:
1" FLAT BARS AVAILABLE



EuroCraft

Aluminum Horizontal Roller Series 300





FRAME FINISH:
WHITE
BRONZE
CLEAR ANODIZED

GLASS MAKE-UP:
IMPACT LAMINATED 9/16"
IMPACT INSULATED 1 3/16"

SIZE:
MAX W:60" - H:144" E.A.

DP:
UP TO 160 (+/- PSF)

EVALUATIONS:
TAS 201-94
TAS 202-94
TAS 203-94
ASTM E331-00
ASTM E283-04
ASTM E1886-13a
ASTM E1996-14a

COLONIALS:
1" FLAT BARS AVAILABLE



EuroCraft

Aluminum Storefront Series 500

